

HARDY SIGNS.

TRANSFORMING THE UK SINCE 1993

RETURN TO WORK // WORKPLACE SOLUTIONS

Email: sales@hardysigns.co.uk Tel: 01283 569102



CONTENTS

At **Hardy Signs** we are here to help with a range of COVID-19 signage to keep your staff, customers and visitors safe. From Social Distancing Floor Graphics to Sanitiser Stations, we have workplace solutions to assist whether you are returning to work or currently open and require support.

Pages 3-5 **Floor & Window Graphics**

Pages 6-7 **Printed Sign Panels**

Page 8 **Roller Banners**

Page 9 **Hand Sanitiser Unit**

Page 10 **Sanitiser Station**

Pages 11-12 **Safety Screens**

Page 13 **22" LCD Hand Sanitiser Display**

Page 14 **10" LCD Hand Sanitiser Display**

FLOOR / WINDOW GRAPHICS



Recommended sizes: 300mm / 400mm / 600mm diameter
Can be made to suit any size with any design required

FLOOR / WINDOW GRAPHICS



Recommended sizes: 300mm / 400mm / 600mm diameter
Can be made to suit any size with any design required

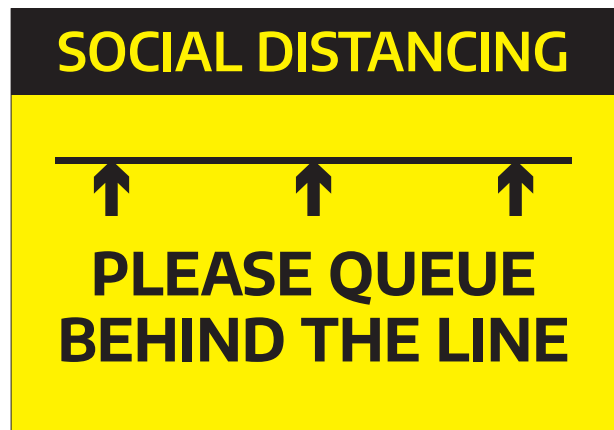
FLOOR / WINDOW GRAPHICS



Recommended sizes: 1000x50mm / A4 / A3 / A2 / A1

Can be made to suit any size with any design required

PRINTED SIGN PANELS



Recommended sizes: A4 / A3 / A2 / A1

Can be made to suit any size with any design required

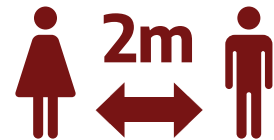
Various materials for both internal and external use

PRINTED SIGN PANELS



Social distancing measures in place

SOCIAL DISTANCING



Please keep 2m apart at all times

Your logo
here



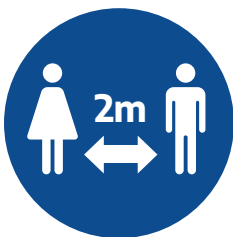
Now wash your hands

Your logo
here



Face masks must
be worn at all times

Your logo
here



Social distancing
Please keep 2m apart



HOW TO USE HAND SANITISER



Apply the product
on your palms



Rub hands
together



Apply on the surface
until dry

Recommended sizes: A4 / A3 / A2 / A1

Can be made to suit any size with any design required

Various materials for both internal and external use

ROLLER BANNERS



Recommended size: 850x2000mm

Other sizes available on request

Any design required

**Design
service
available**



HAND SANITISER UNIT



Bespoke hand sanitiser unit
300x600mm printed PVC sign panel
Mounted liquid sanitiser
Any design required




SANITISATION STATION

Sanitisation Station

Your logo
here

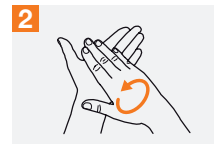


Please use hand sanitiser before entry

 Duration of the entire procedure: 20-30 seconds



Apply a palmful of the product in a cupped hand, covering all surfaces;



Rub hands palm to palm;



Right palm over left dorsum with interlaced fingers and vice versa;



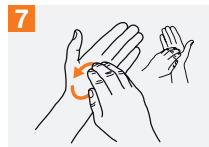
Palm to palm with fingers interlaced;



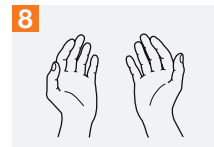
Backs of fingers to opposing palms with fingers interlocked;



Rotational rubbing of left thumb clasped in right palm and vice versa;



Rotational rubbing, backwards and forwards with clasped fingers of right hand in left palm and vice versa;



Once dry, your hands are safe.

Bespoke sanitiser station

500x500mm printed PVC sign panel

Mounted liquid sanitiser

Any design required

SAFETY SCREENS



Manufactured from clear perspex our beautifully designed, fully compliant and premium quality screens blend into any workspace environment. Our wide range can suit a variety of applications including free-standing desk screens, reception desks, counter protection, desk partitions, etc.

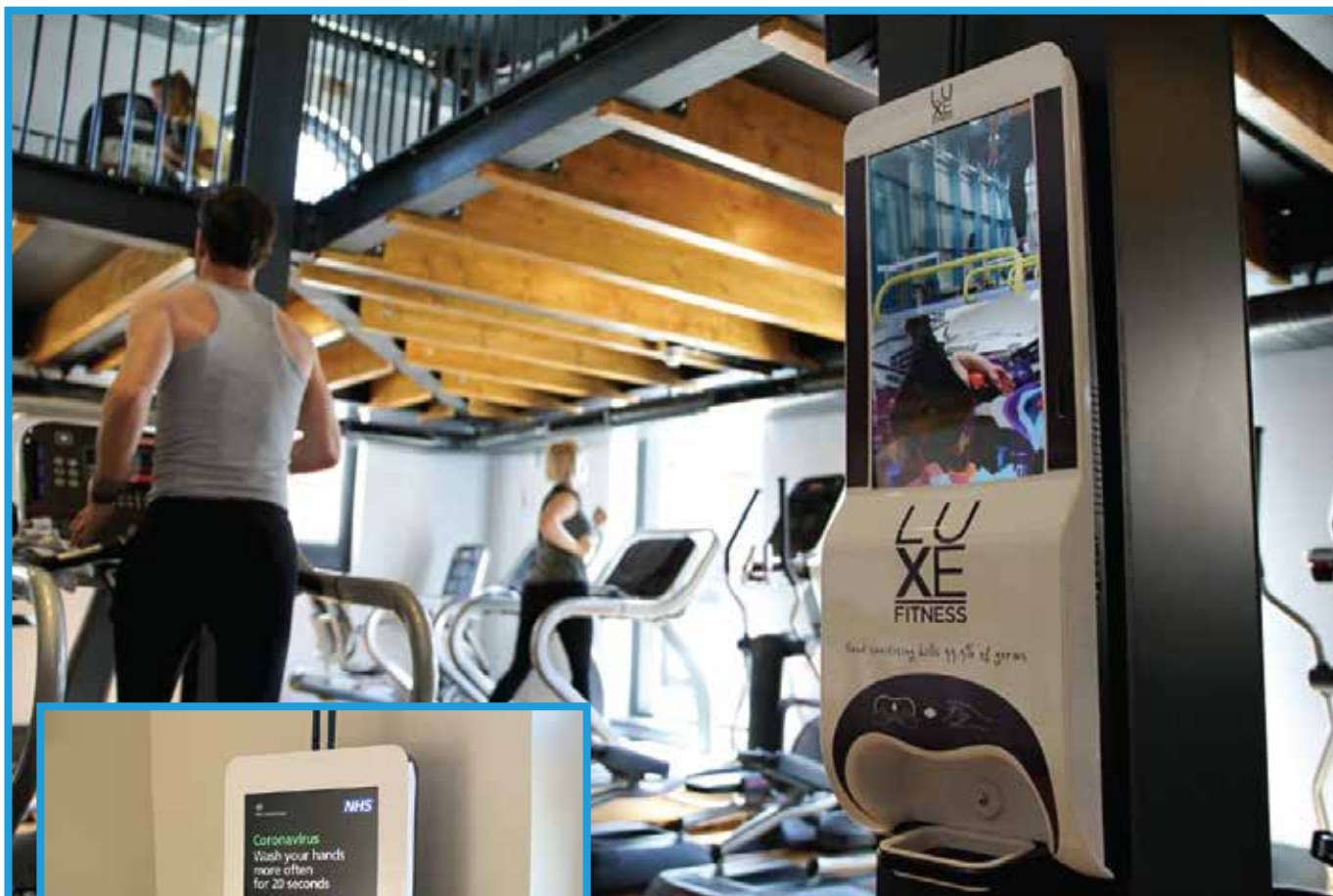
SAFETY SCREENS



We can
survey
for you



22" LCD HAND SANITISER DISPLAY



Protect your Staff and Customers with our Unique Hand Sanitiser Stations

- Auto-Dispenser
- 3.6L Internal Reservoir
- Cloud Digital Signage & Pump Reports
- Floor Standing or Wall Mounted
- PCAP Touch
- Easy Maintenance & Cleaning
- Independent 4G Connection
- 3 Years Warranty & Remote Support

For more information visit:

<https://hardysigns.co.uk/products-services/lcd-hand-sanitiser-display>

10" LCD HAND SANITISER DISPLAY



Protect your Staff and Customers with our Unique Hand Sanitiser Kiosk

- Auto-Dispenser
- 3.6L Internal Reservoir
- USB Plug & Play Media Player
- Floor Standing or Wall Mounted



RETURN TO WORK // STAY SAFE

